

**RUSH  
WITT &  
WILSON**



**RUSH  
WITT &**

**Flat 38 Holmebury House Holmesdale Gardens, Hastings, TN34 1LS**  
**Offers In Excess Of £70,000 Leasehold**



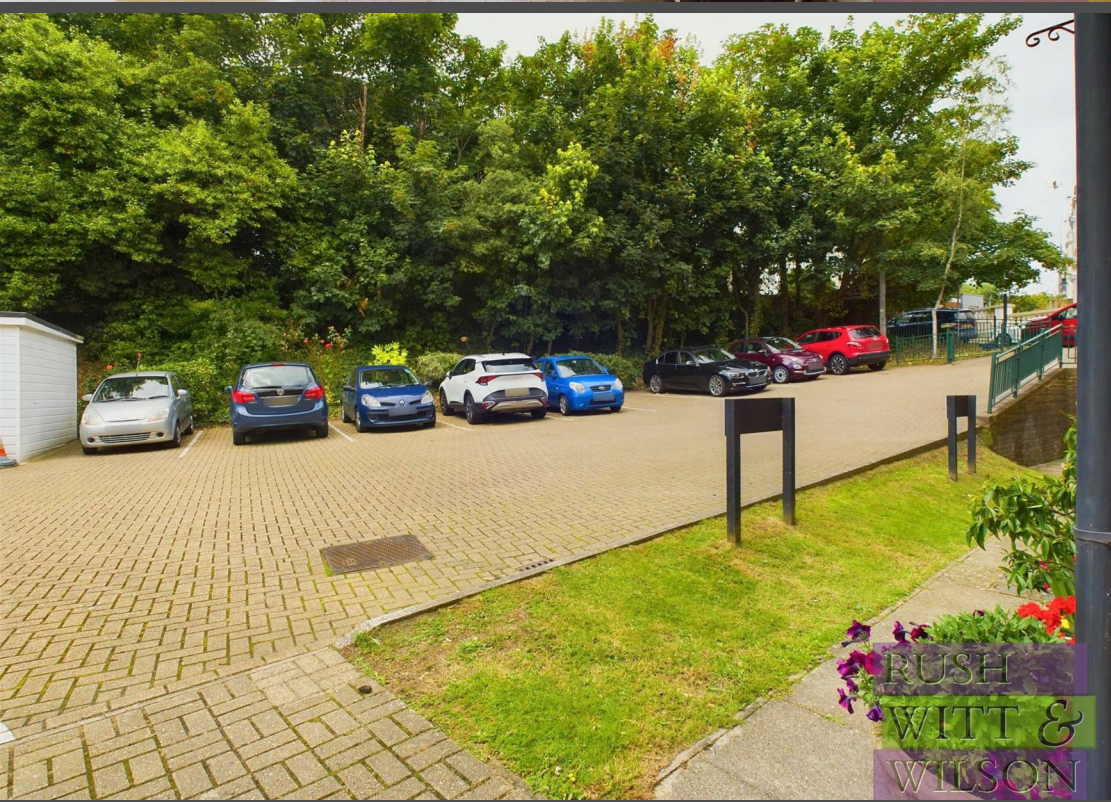
**Welcome to Holmebury House in Hastings, where a charming RETIREMENT APARTMENT awaits you! Offered to the market for those aged 60 and above, This delightful property features a cosy reception room, perfect for relaxing or entertaining guests. With one bedroom and one bathroom and kitchen, this flat offers a comfortable and manageable living space for those looking to downsize or enjoy a peaceful retirement. The location in Holmesdale Gardens is neatly positioned for access to local transport links the town centre and seafront, ideal for those seeking a quiet and serene environment to call home. Whether you're looking to retire in style or simply downsize to a more manageable space, this retirement flat in Hastings is sure to meet your needs. Don't miss out on the opportunity to own a piece of this peaceful and picturesque neighbourhood. Contact us today to arrange a viewing!**



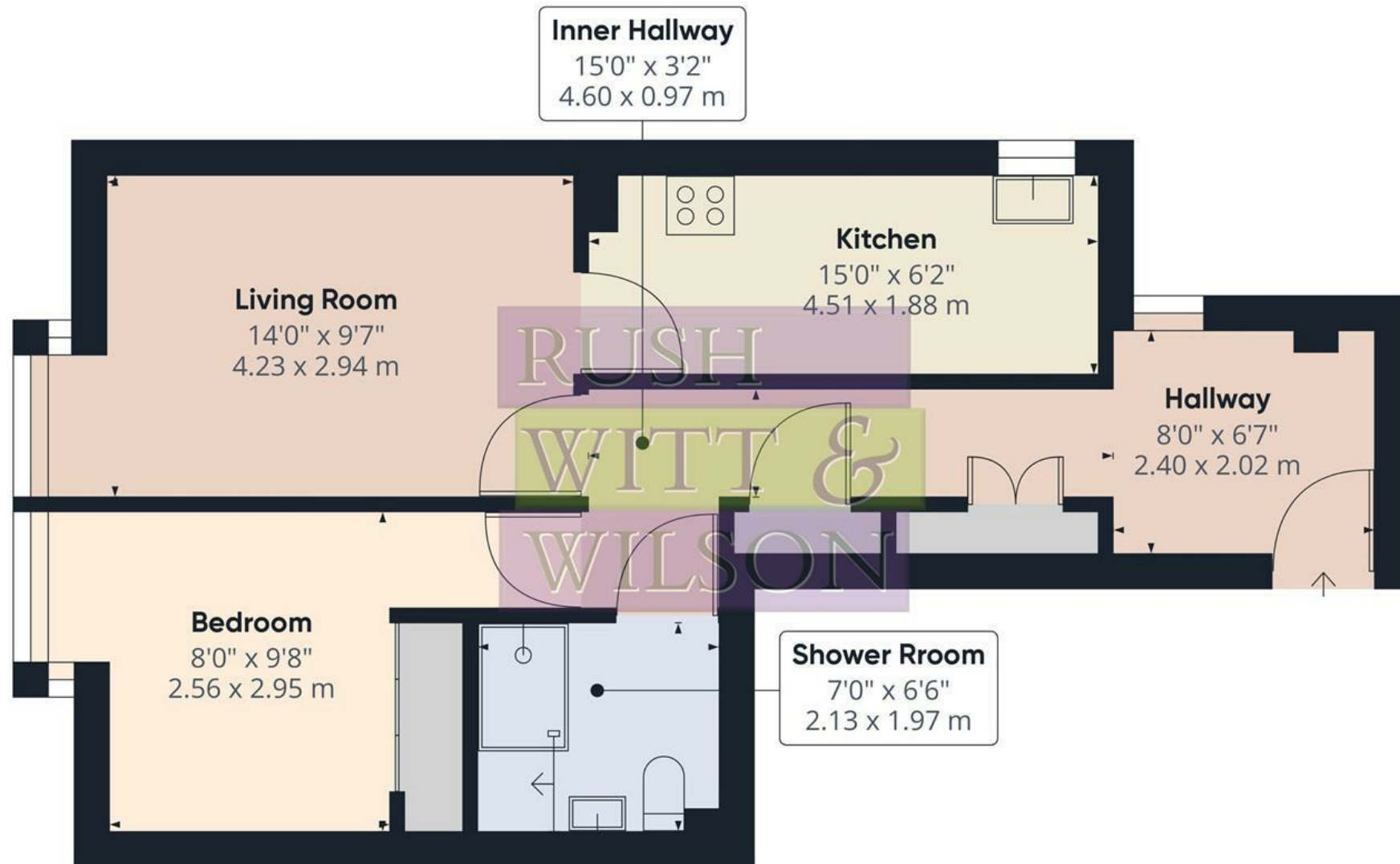












**Approximate total area<sup>(1)</sup>**

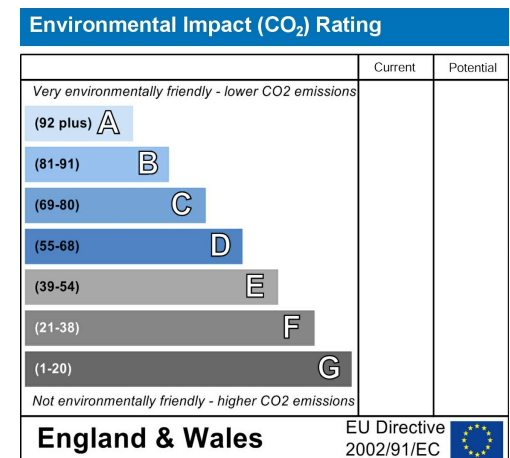
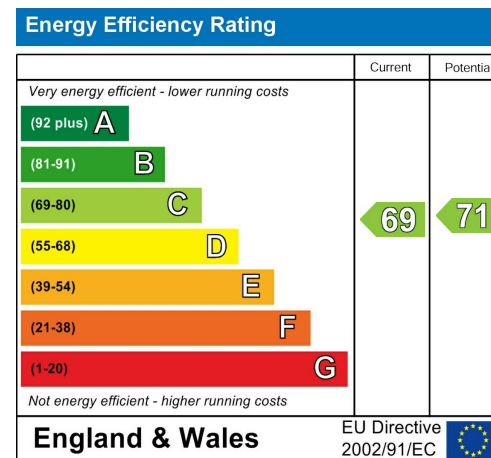
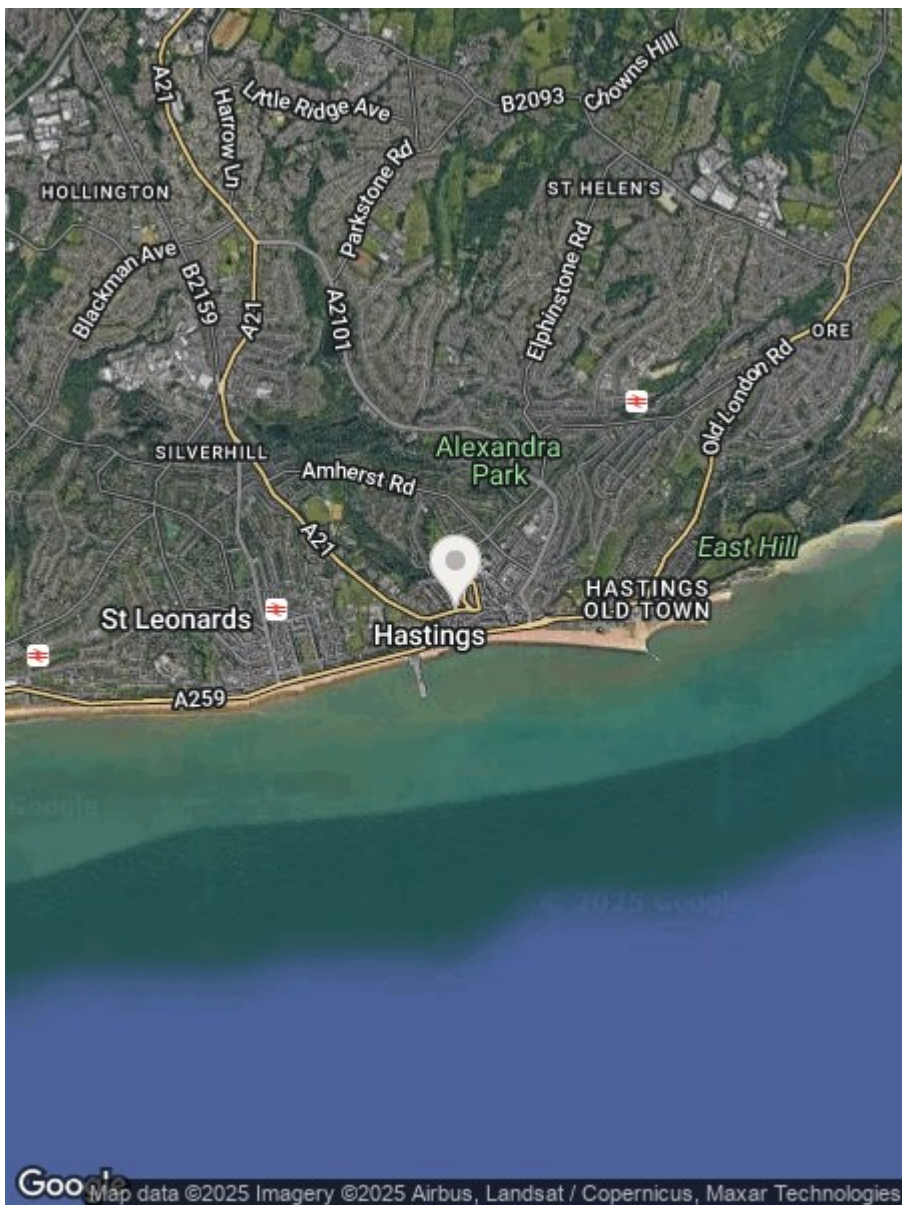
531.84 ft<sup>2</sup>

49.41 m<sup>2</sup>

(1) Excluding balconies and terraces

While every attempt has been made to ensure accuracy, all measurements are approximate, not to scale. This floor plan is for illustrative purposes only.

**GIRAFFE 360**



**RUSH  
WITT &  
WILSON**

**Residential Estate Agents**  
**Lettings & Property Management**



**Rother House Havelock Road**  
**Hastings**  
**East Sussex**  
**TN34 1BP**  
**Tel: 01424 442443**  
**hastings@rushwittwilson.co.uk**  
**www.rushwittwilson.co.uk**